

Public Document Pack



NOTICE OF MEETING

Meeting	Executive Member for Education and Skills Decision Day
Date and Time	Wednesday, 18th March, 2020 at 1.00 pm
Place	Wellington Room - HCC
Enquiries to	members.services@hants.gov.uk

John Coughlan CBE
Chief Executive
The Castle, Winchester SO23 8UJ

FILMING AND BROADCAST NOTIFICATION

This meeting may be recorded and broadcast live on the County Council's website. The meeting may also be recorded and broadcast by the press and members of the public – please see the Filming Protocol available on the County Council's website.

AGENDA

DEPUTATIONS

To receive any deputations notified under Standing Order 12.

KEY DECISIONS (NON-EXEMPT/NON-CONFIDENTIAL)

1. GRANGE JUNIOR SCHOOL, GOSPORT (Pages 3 - 20)

To consider a report of the Director of Culture, Communities and Business Services seeking spend approval for project proposals for Grange Junior School in Gosport.

NON KEY DECISIONS (NON-EXEMPT/NON-CONFIDENTIAL)

2. RESOURCED PROVISION AT VARIOUS SCHOOLS (Pages 21 - 66)

To consider a report of the Director of Children's Services seeking approval for the publication of public notices under Section 19 (1) of the Education and Inspections Act 2006.

KEY DECISIONS (EXEMPT/CONFIDENTIAL)

None

NON KEY DECISIONS (EXEMPT/CONFIDENTIAL)

None

ABOUT THIS AGENDA:

On request, this agenda can be provided in alternative versions (such as large print, Braille or audio) and in alternative languages.

ABOUT THIS MEETING:

The press and public are welcome to attend the public sessions of the meeting. If you have any particular requirements, for example if you require wheelchair access, please contact members.services@hants.gov.uk for assistance.

County Councillors attending as appointed members of this Committee or by virtue of Standing Order 18.5; or with the concurrence of the Chairman in connection with their duties as members of the Council or as a local County Councillor qualify for travelling expenses.

HAMPSHIRE COUNTY COUNCIL

Decision Report

Decision Maker:	Executive Member for Education and Skills
Date:	18 March 2020
Title:	Grange Junior School, Gosport
Report From:	Director of Culture, Communities and Business Services

Contact names: Steve Clow and Bob Wallbridge

Tel: 01962 847858
01962 847894

Email: steve.clow@hants.gov.uk
bob.wallbridge@hants.gov.uk

Purpose of this Report

- 1 The purpose of this report is to seek spend approval to the project proposals at Grange Junior School.

Recommendations

- 2 That the Executive Member for Education and Skills, grants spend approval to the project proposals for Grange Junior School at the total cost of £7,924,000.

Executive Summary

3. The project comprises a new Junior School building to replace the existing school structure originally built in 1963. The timber frame of the existing building is nearing the end of its useful life and it is proposed to replace the existing building in its entirety. This is the only feasible option given the condition of the structure. It will have a significant benefit to the school in providing a new high-quality environment for teaching and learning.
4. Grange Junior School currently provides education for up to 360 children (3 forms of entry) aged between 7 and 10 years old. A review of pupil forecasts has been undertaken and it is planned that the school reduce its capacity to 300 places 2.5fe from September 2021. The replacement building takes account of this reduction in capacity.
5. The project is included in the Children Services Capital Programme, approved at the Executive Lead Member for Children's Services Decision Day on 10 January 2020, with a budget of £7,924,000.
6. A Planning application is to be submitted in April 2020.

Background

7. Grange Junior School provides education for children aged between 7 and 10 and currently has capacity for up to 360 children, 3fe. There are currently 318 pupils on roll.
8. A review of pupil numbers in the area has been undertaken, this has highlighted a drop in numbers, it is therefore planned the school reduces its published admission number (PAN) from 90 to 75, providing 300 school places, 2.5fe, from September 2021. Further discussions are taking place with the headteachers of both the junior and infant schools on future pupil numbers. Forecasts indicate a further drop in numbers is likely and the building plans reflect an approach to manage down the capacity of the school as pupil numbers decline.
9. The proposed new building will provide accommodation for 300 pupils. The design of the new building allows for the reduction in pupil numbers with general teaching classrooms becoming specialist teaching spaces over time. Should the number of pupils on roll take longer to reduce to the 300 places than currently expected, a contingency of temporary accommodation may be required in the short term to manage the situation.
10. The project is included in the Children's Services Capital Programme, approved at the Executive Lead Member for Children's Services & Young People Decision Day on 10 January 2020, which outlines the available budget for the project.
11. The existing timber framed building at Grange Junior school dates from 1963 and is made up of both single and two storey elements. The cladding is in poor condition and a structural assessment of the timber frame has determined that the full replacement of the existing building is required.
12. There are also similar proposals for the replacement of the timber framed building at Fryern Junior School, Chandlers Ford. These were approved at the Executive Member for Education and Skills Decision Day on 10 January 2020. The two projects are being designed and procured to realise time benefits and cost efficiencies through a common approach to the delivery of the replacement school buildings.

Finance

13. Capital Expenditure:

The Capital Expenditure has already been approved in principle; the following tables outline the breakdown of its distribution across the project:

Capital Expenditure	Current Estimate	Capital Programme
	£'000	£'000
Buildings	6,802	6,802

Fees	1,122	1,122
	7,924	7,924

14. Sources of Funding:

Financial Provision for Total Scheme	Buildings £'000	Fees £'000	Total Cost £'000
1. From Own Resources			
a) Capital Programme (as above)	6,802	1,122	7,924
Total	6,802	1,122	7,924

i. *Building Cost:*

Net Cost = £2,907/m²

Gross Cost = £4,302/m²

ii. *Furniture & Equipment:*

Included in the above figures is an allocation of £404,183 for the provision of loose furniture, fittings, equipment and I.T. (inclusive of fees).

iii. *School Balances:*

The school has the following level of balances:

Published revenue balance as at 31 March 2019: £136,581.95

Devolved capital as at 31 March 2019: £56,981.42

Revenue Issues:

iv. *Overview of Revenue Implications:*

(a) Employees £'000	(b) Other £'000	(a+b) *Net Current Expenditure £'000	(c) Capital Charges £'000	(a + b + c) Total Net Expenditure £'000
---------------------------	-----------------------	---	------------------------------------	--

Revenue	0	0	0	436	436
Implications Additional + / Reductions					

Details of Site and Existing Infrastructure

15. Grange Junior School is located off Franklin Road, Gosport and shares vehicular and pedestrian access with the adjacent Grange Infant School.
16. The original timber framed building constructed in 1963 comprises a two-storey classroom block and a single storey element containing the hall, kitchen, library and office accommodation. Significant extensions of similar construction were added in 1966 and 1970 providing a further single storey building and two storey classroom block.
17. A further single storey classroom extension incorporating specialist teaching was completed in September 2014. This extension was constructed independently of the timber framed buildings and is to be retained as part of the proposals.
18. The site is bounded by Grange Lane to the east and St Nicholas Avenue to the south. Grange Infant School and Franklin Road are to the west. An open area of recreation space is located to the north. The new building is to be located along the frontage of Grange Lane on an area of existing hard play, enabling the existing school to remain in use during construction. The existing building will be demolished, and landscape reinstatement works completed once the new school building has been constructed and is operational.
19. There are significant trees bounding the site and in a central group between the existing school buildings and playing fields. The best quality trees within the central group and all trees on the boundaries are to be retained as part of the proposals.
20. The existing vehicular access to both schools as the site is to be improved by providing a segregated one-way route through the proposed new car park with the creation of a new vehicular exit onto Grange Lane. There is also a new pedestrian access gate proposed from Grange Lane.
21. The existing services infrastructure to the site are sufficient to accommodate the project proposals, with the exception of one additional fire hydrant that is proposed to be located on Grange Lane.

Scope of the Project

22. The proposed project comprises the demolition of the existing timber framed buildings, the construction of the new single storey school with

improvements to external play areas, car parking and improvements to the access road.

The Proposed Building

23. The proposed new building will comprise:

- 10 general teaching classrooms with adjacent break out spaces
- Library / Learning Resource Centre
- Main hall and adjacent kitchen (which also serves the infant school)
- Pupil and staff toilets
- Staff room
- Medical Inspection room
- Staff office, meeting and administration rooms

The element of the existing building which is to be retained will contain:

- Specialist Teaching room
- Nurture Room and Link Worker office

24. The proposed school building is to be single storey construction with a rectangular compact form, the larger double height volumes of the hall and kitchen are located the northern end of the site close to the main entrance and service road.

25. It is proposed that a significant proportion of the new building is to be prefabricated off-site in sections built using modular structures. The one exception is the structure for the hall which will be a steel frame built on site. The off-site construction of the classrooms and kitchen and ancillary space will reduce the construction period on site and the time of any disruption to the existing junior and infant school which will remain in use during the construction period. Once brought to site the modular building sections will be finished externally with brickwork, aluminium windows, doors and rooflights. The roof is constructed with a high-performance covering.

External Works

26. The external works comprise:

- Replacement of the pupil hard play area
- Synthetic surfacing under tree canopy to west of new building
- A separate nurture play area
- Pupil and staff cycle shelters

- New staff parking, one-way access road and new exit onto Grange Lane
27. The project will provide car parking on the school site in line with Hampshire County Council's current parking standards. There will be 26 car parking spaces provided for staff and visitors, two of which will be fully accessible. The car park is to be shared between the infant and junior school staff.
28. A new vehicle exit will be formed onto Grange Lane. This will allow a one way through route for the staff car park alleviating pressure on the current access arrangement. The entrance and exit are to be managed by a barrier with communication and CCTV link to both Infant and Junior Schools.

Planning

29. A planning application is to be submitted in April 2020.

Construction Management

30. The Junior and Infant Schools will remain in use during the construction period and local management arrangements will be put in place to manage the health and safety impact for all school users. The contractor will access the school site via a temporary entrance off Grange Lane. Contractor access and working areas will be segregated from the school users.
31. No deliveries or construction vehicle movements will take place at the start or end of the school day, in order to avoid traffic conflict when pupils are arriving at or departing from the school.
32. The works will be procured through the Southern Modular Building Framework and are planned to commence on site during Summer 2020 with the new building completing in Spring 2021. Demolition of the existing buildings and landscape reinstatement works will follow.

Building Management

33. The existing building management arrangements will remain in place.

Professional Resources

Architecture	Culture, Communities & Business Services
Landscape Architecture	Culture, Communities & Business Services
Interior Design	Culture, Communities & Business Services
Mechanical & Electrical	
Engineering	Culture, Communities & Business Service
Structural Engineering	Culture, Communities & Business Services

Cost Management
Principal Designer
Drainage Engineering,

Culture, Communities & Business Services
Culture, Communities & Business Services
Economy, Transport and Environment

Consultation and Equalities

34. A pre-planning consultation took place between the 5 June and 3 July 2019 with a drop-in session held on 20 June for consultees to meet with the project team and school to discuss the project. The responses received were positive and welcomed the proposed development. Suggestions regarding additional cycle spaces have been included within the proposals
35. The following have been consulted during the development of this project and feedback can be seen in overview in Appendix A:
- Headteacher
 - School Governors
 - Children's Services
 - Executive Lead Member for Children's Services
 - Local County Councillor
 - Local Residents
 - Fire Officer
 - Access Officer
 - Planning Department
 - Hampshire County Council Catering Service

Risk & Impact Issues

Fire Risk Assessment

36. With respect to fire safety and property protection, the proposals have been risk assessed in line with the agreed Property Services procedures and confirmed that the provision of sprinklers is not required in this instance.
37. The proposals will meet the requirements of the Building Regulations (BB100 Fire Safety in Schools), including enhancements beyond minimum provision, and are consistent with current fire safety legislation, the partnership arrangement with Hampshire Fire and Rescue Services, and are in line with the County Council's policy to manage corporate risk.
38. The project proposals include the following fire safety enhancements:
- Automatic fire detection, with full (24/7) remote monitoring.
 - External finishes specified as fire resistant

Health and Safety

39. Design risk assessments, pre-construction health & safety information and a Health & Safety File will be produced and initiated in accordance with the

Construction Design and Management Regulations for the proposed scheme.

Climate Change

40. The project will incorporate the following features to reduce energy consumption and mitigate the impact of climate change:
- A highly insulated building envelope including high performance windows, doors and roof lights
 - Provision of good levels of day lighting to all teaching areas to reduce the need for artificial lighting and energy use.
 - Energy efficient lighting and heating controls.
 - The proposals will include photovoltaic solar panels.
 - Natural ventilation to main spaces with night-time cooling strategy.
 - Strategic placement of extended roof canopies/solar shading over large glazing areas to avoid summer-time overheating.
 - Additional cycle and scooter storage to encourage active modes of travel
 - The use of timber from sustainable sources
 - A site waste management plan to ensure the principles of minimising waste are maintained during construction

REQUIRED CORPORATE AND LEGAL INFORMATION:

Links to the Strategic Plan

Hampshire maintains strong and sustainable economic growth and prosperity:	yes
People in Hampshire live safe, healthy and independent lives:	yes
People in Hampshire enjoy a rich and diverse environment:	yes
People in Hampshire enjoy being part of strong, inclusive communities:	yes

Section 100 D - Local Government Act 1972 - background documents

The following documents discuss facts or matters on which this report, or an important part of it, is based and have been relied upon to a material extent in the preparation of this report. (NB: the list excludes published works and any documents which disclose exempt or confidential information as defined in the Act.)

Document

Location

None

EQUALITIES IMPACT ASSESSMENT:

1. Equality Duty

The County Council has a duty under Section 149 of the Equality Act 2010 ('the Act') to have due regard in the exercise of its functions to the need to:

- Eliminate discrimination, harassment and victimisation and any other conduct prohibited by or under the Act with regard to the protected characteristics as set out in section 4 of the Act (age, disability, gender reassignment, marriage and civil partnership, pregnancy and maternity, race, religion or belief, sex and sexual orientation);
- Advance equality of opportunity between persons who share a relevant protected characteristic within section 149(7) of the Act (age, disability, gender reassignment, pregnancy and maternity, race, religion or belief, sex and sexual orientation) and those who do not share it;
- Foster good relations between persons who share a relevant protected characteristic within section 149(7) of the Act (see above) and persons who do not share it.

Due regard in this context involves having due regard in particular to:

- The need to remove or minimise disadvantages suffered by persons sharing a relevant protected characteristic that are connected to that characteristic;
- Take steps to meet the needs of persons sharing a relevant protected characteristic that are different from the needs of persons who do not share it;
- Encourage persons sharing a relevant protected characteristic to participate in public life or in any other activity in which participation by such persons is disproportionately low.

2. Equalities Impact Assessment, please see Appendix B

FEEDBACK FROM CONSULTEES:**OTHER EXECUTIVE MEMBERS:**

Executive Member & Portfolio	Reason for Consultation	Date Consulted	Response:
Councillor Patricia Stallard, Executive Lead Member for Children's Services and Young People.	Portfolio Holder		

OTHER FORMAL CONSULTEES:

Member/ Councillor	Reason for Consultation	Date Consulted	Response:
Councillor Philpott	Local Member for Bridgemarky		

Equality Impact Assessment



Hampshire
County Council

Grange Junior School, Gosport – replacement build

Accountable officer: Glenn Parkinson

Email address: lily.corner@hants.gov.uk

Department: Children's Services

Date of
assessment: 17/09/2019

Description of current service/policy

A structural survey and condition assessment of the building at Grange Junior has determined that the two storey elements cannot be re-clad and that a significant ongoing expense is required to maintain the building and prolong its use.

Based on this assessment, a feasibility analysis determined that full replacement of the existing building offered the best value for money solution to Hampshire County Council.

The school currently has a Planned Admission Number (PAN) of 90 but pupil forecasts indicate that numbers may fall in future years due to a drop in the number of births and lack of new housing in the area.

Geographical impact: Gosport

Description of proposed change

The project will provide enough teaching spaces for the school to operate at 3 forms of entry but, if numbers drop, allow space classrooms to become specialist teaching spaces.

The project scope also includes;

- New hard and soft play areas
- An extended and refurbished car park meeting the requirements of HCC's published on site staff parking standards.
- A segregated one-way route through the top of the site that overcomes congestion and potential conflict between pedestrians and vehicle movement.
- New Pedestrian access gate from Grange Lane.

It is anticipated that works will commence on site during Summer 2020 with new building completing Spring 2021.

Impacts of the proposed change

This impact assessment covers Service users

Engagement and consultation

Has engagement or consultation been carried out? Yes

A pre-planning consultation took place between the 5th June and 3rd July 2019 with a drop-in session held on 20th June for consultees to meet with the project team and school to discuss the project. The responses received were positive and welcomed the proposed development of the site. Suggestions regarding additional staff and visitor cycle spaces have been included in the proposals.

Statutory considerations	Impact	Mitigation
Age: Neutral		
Disability: Neutral		
Sexual orientation: Neutral		
Race: Neutral		
Religion and belief: Neutral		

Gender reassignment: Neutral		
Gender: Neutral		
Marriage and civil partnership: Neutral		
Pregnancy and maternity: Neutral		
Other policy considerations	Impact	Mitigation
Poverty: Neutral		
Rurality: Neutral		

Neutrality statement (if all considerations have a neutral impact)

The project is a replacement build scheme which will replace the current Grange Junior building with the same facilities with neutral impact.

The children will continue to be taught in in the existing school building whilst the new school building is being built.

Once the new school building has been built the children will move into the new school building.

After this, demolitions of the current Grange Junior school building will commence, and subsequently landscaping will be required to complete the works. This is expected to complete

Winter 2021/22

Any other information

This page is intentionally left blank

Proposed School Building

Key:

- a Existing Grange Infant School
- b Proposed Junior School
- c Existing School Playing field
- d Existing Nursery

Proposed Site Plan:

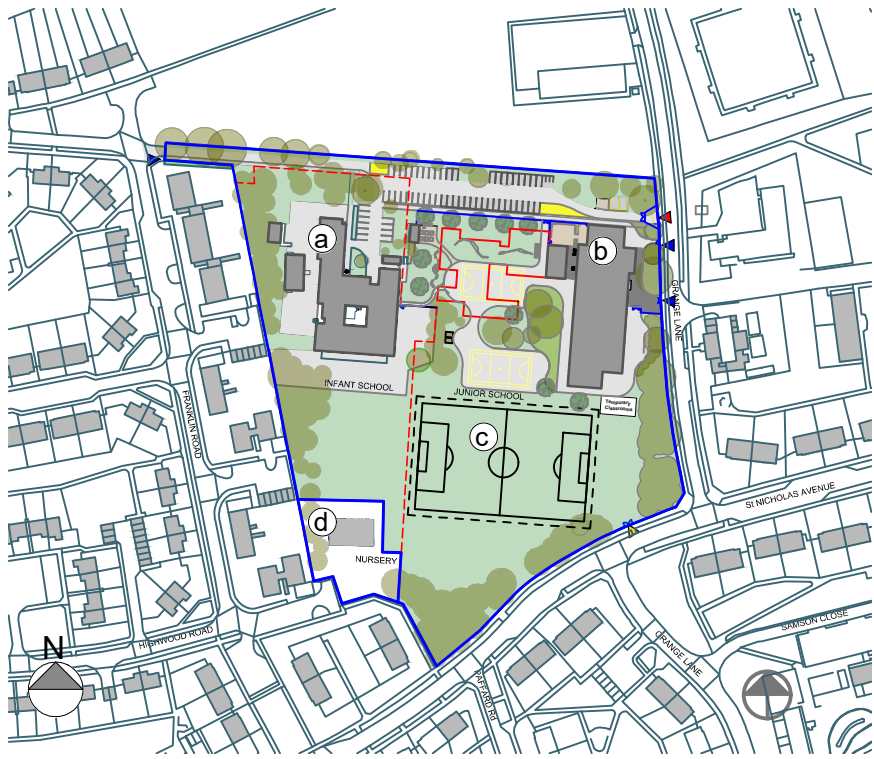
- 1 Proposed 2.5FE Junior School
- 2 Retained 2015 existing building
- 3 Existing Infant School
- 4 Existing Car Park Remarketed to New Layout
- 5 Proposed one way system and additional car park
- 6 Proposed Junior Soft Play
- 7 Proposed Infant and Junior Games Courts
- 8 Potential location for temporary classrooms

- Teaching - New Build
- Teaching - Refurbishment.
- Non-Teaching - New Build
- Non-Teaching - Refurbishment.
- Notional Infant / Junior Boundary
- Site Boundary
- ▶ Pedestrian Access
- ▶ Vehicular Access
- ▶ Contractor Access
- ▶ Maintenance Access

© Crown Copyright and database rights 2019. All rights reserved.
HCC 100019180.

DRAFT
Project Appraisal

Not to Scale
P11364- A.100_Rev A
February 2020

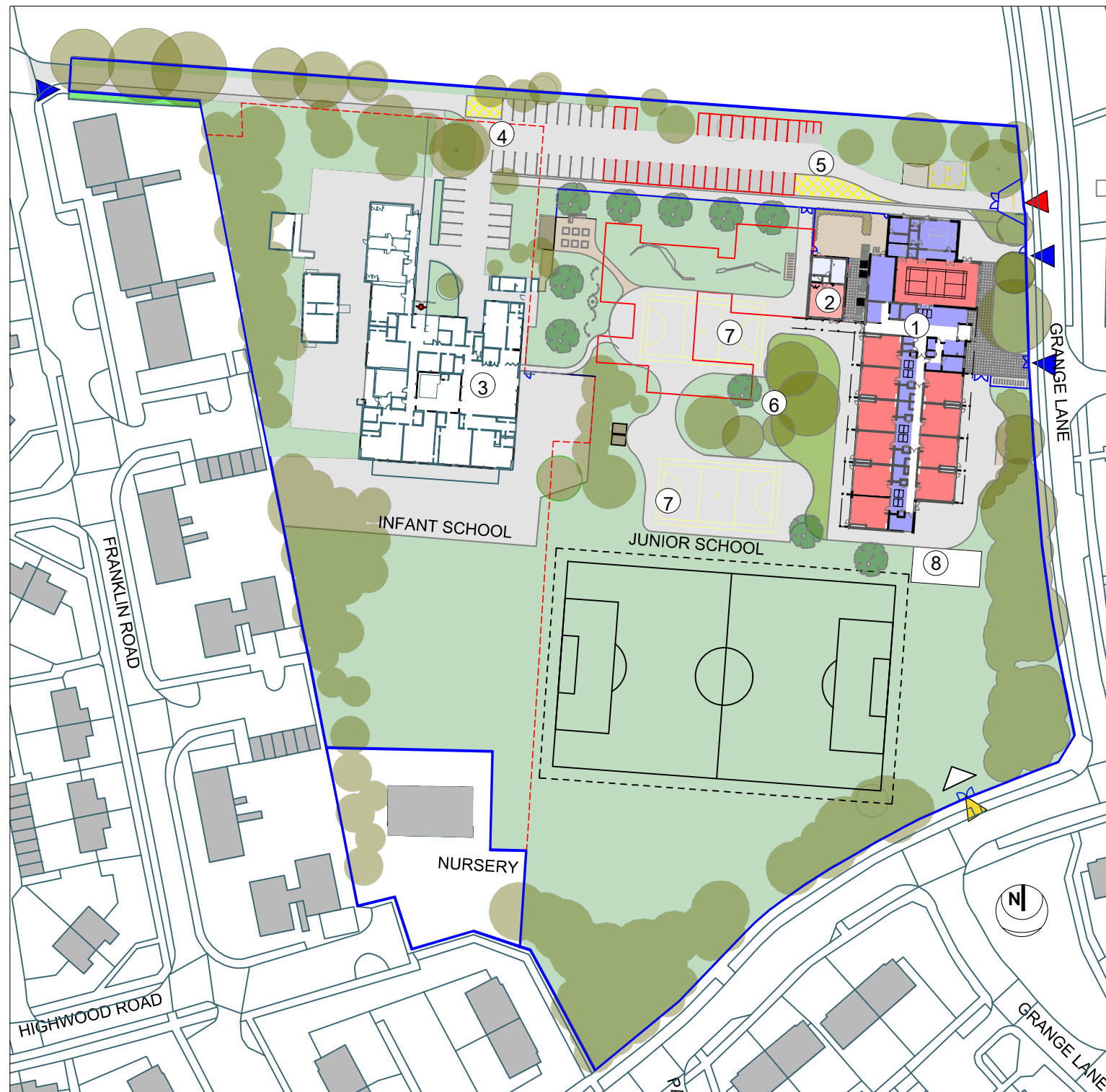


Proposed Site Location Plan

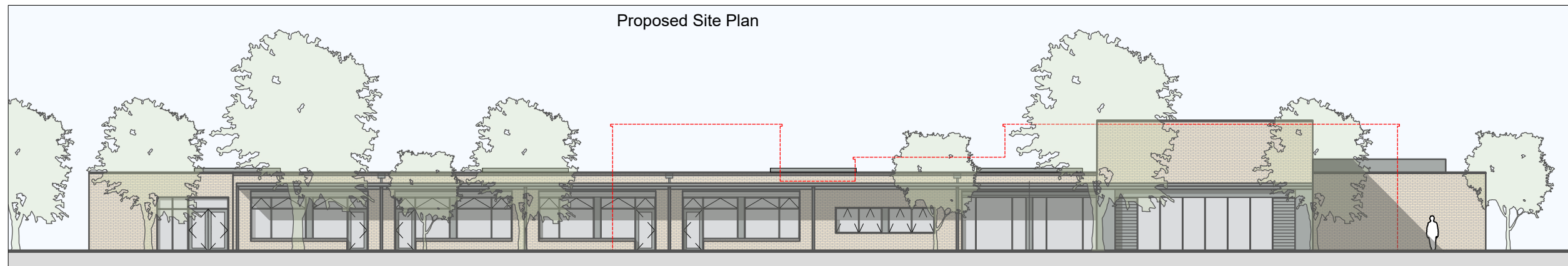
Page 19



Proposed View from Grange Lane



Proposed Site Plan



Proposed East Elevation - Junior School

Proposed Junior Building Classrooms

Proposed Admin/ Entrance

Proposed Hall

Proposed Kitchen

This page is intentionally left blank

HAMPSHIRE COUNTY COUNCIL

Decision Report

Decision Maker:	Executive Member for Education and Skills
Date:	18 March 2020
Title:	Resourced Provision at Various Schools
Report From:	Director of Children's Services

Contact name: Janet Hoff

Tel: 01962 832206

Email: janet.hoff@hants.gov.uk

Purpose of this Report

1. The purpose of this report is to seek approval to proceed with the publication of public notices under Section 19 (1) of the Education and Inspections Act 2006. The public notices are an extract from the complete proposals of the projects that can be found at appendix 1.

Recommendation

2. That approval is given by the Executive Member for Education and Skills, to proceed with the publication of public notices under Section 19 (1) of the Education and Inspections Act 2006 to expand or create resourced provision at the following schools with effect from 1 September 2020:
 - **Holbrook Primary School, Gosport for pupils with autism (ASD) and social communication needs (SLCN)**
 - **Liss Infant School, Petersfield for pupils with moderate learning difficulties (MLD)**
 - **Medstead Primary School, Alton for pupils with a hearing impairment (HI)**
 - **Pennington Junior School, Lymington for children with Social, Emotional and Mental Health (SEMH)**
 - **The Federation of Trosnant Schools, Havant for pupils with social, emotional and mental health needs (SEMH)**

Executive Summary

3. Hampshire County Council is committed to further developing successful provision or creating new provision where possible to meet demand within the SEND sector. Currently there is an increased need to provide support for pupils with social, emotional and mental health needs (SEMH), moderate learning difficulties (MLD), Hearing Impairment (HI) and Autistic Spectrum Disorder (ASD) across the county. These proposals will provide much needed specialist educational capacity to meet this increased need.

Contextual Information

4. Hampshire County Council is committed to further developing successful provision or creating new provision where possible to meet demand within the SEND sector. Currently there is an increased need to provide support for pupils with social, emotional and mental health needs (SEMH), moderate learning difficulties (MLD), Hearing Impairment (HI) and Autistic Spectrum Disorder (ASD) across the county. These proposals will provide much needed specialist educational capacity to meet this increased need.
5. In addition to the capital costs outlined for the individual projects there is an ongoing revenue cost for resourced provisions of approximately £15k per place made up of £10k place funding and average top up funding of £5k. (approx. £4k through the schools funding formula and the remainder from the High Needs Block)

Consultation and Equalities

6. Formal consultations took place between 20 January and the 14 February 2020. Letters were sent to consultees as detailed below and consultation meetings were held at the schools during the consultation period. The proposals were also included on the Hampshire County Council's consultation website. Copies of the consultation letters are attached under appendix

7. Letters were sent to:

- Parents of children attending the schools
- Headteachers, school staff and Governing Body of the schools
- Headteachers and Chairs of Governors of neighbouring schools
- Borough, district and parish Councils – Local Councillors
- Trade union representatives
- Local Dioceses
- Local MPs
- HCC Elected Members
- Residents in the local areas

8. As part of the consultation process, officers from Hampshire County Council attended the consultation meetings, in order to explain how the projects would create new or expand existing resourced provision at the various schools.
9. Hampshire County Council received a number of comments all of which are in support of the proposals. The comments supported the creation of additional provision to meet the special educational needs of pupils with social, emotional and mental health needs (SEMH), moderate learning difficulties (MLD), Hearing Impairment (HI) and Autistic Spectrum Disorder (ASD) across the county.
10. The remaining comments expressed concerns over parking at the beginning and end of the school day.
11. In response to the comments made around parking during drop off and pick up times, the majority of the children that attend the schools are driven to the school either by taxi or by minibus. These forms of transport drive on to the school site to drop off and pick up the children. This system will still be in place should the decision be made to implement the proposals. Hampshire County Council will inform the schools with concerns around parking for them to encourage individual parents that do drop off their children to park appropriately.
12. In considering all the responses received, the County Council believes that the creation or further development of the resourced provisions detailed above is necessary, and that comments received did not represent sufficient concern to prevent proceeding with the projects.

Equality Impact Assessments (EIA) has been completed in relation to each of the projects.

13. Not to approve the proposal would mean that there are insufficient primary places for children who have social, emotional and mental health needs (SEMH), moderate learning difficulties (MLD), Hearing Impairment (HI) and Autistic Spectrum Disorder (ASD) to meet the demand from across Hampshire.

Conclusions

14. Hampshire County Council has a statutory duty to provide school places for all children including those who have special educational needs and or a disability. There are gaps in provision across the county for primary age children who have social, emotional and mental health needs (SEMH), moderate learning difficulties (MLD), Hearing Impairment (HI) and Autistic Spectrum Disorder (ASD). In order to meet the County Council's statutory duty to meet the needs for these children, the creation and expansion of these Resourced Provisions is necessary.

REQUIRED CORPORATE AND LEGAL INFORMATION:

Links to the Strategic Plan

Hampshire maintains strong and sustainable economic growth and prosperity:	yes
People in Hampshire live safe, healthy and independent lives:	yes
People in Hampshire enjoy a rich and diverse environment:	yes
People in Hampshire enjoy being part of strong, inclusive communities:	yes

Section 100 D - Local Government Act 1972 - background documents	
<p>The following documents discuss facts or matters on which this report, or an important part of it, is based and have been relied upon to a material extent in the preparation of this report. (NB: the list excludes published works and any documents which disclose exempt or confidential information as defined in the Act.)</p>	
<u>Document</u>	<u>Location</u>
None	

EQUALITIES IMPACT ASSESSMENT:

1. Equality Duty

The County Council has a duty under Section 149 of the Equality Act 2010 ('the Act') to have due regard in the exercise of its functions to the need to:

- Eliminate discrimination, harassment and victimisation and any other conduct prohibited by or under the Act with regard to the protected characteristics as set out in section 4 of the Act (age, disability, gender reassignment, marriage and civil partnership, pregnancy and maternity, race, religion or belief, sex and sexual orientation);
- Advance equality of opportunity between persons who share a relevant protected characteristic within section 149(7) of the Act (age, disability, gender reassignment, pregnancy and maternity, race, religion or belief, sex and sexual orientation) and those who do not share it;
- Foster good relations between persons who share a relevant protected characteristic within section 149(7) of the Act (see above) and persons who do not share it.

Due regard in this context involves having due regard in particular to:

- The need to remove or minimise disadvantages suffered by persons sharing a relevant protected characteristic that are connected to that characteristic;
- Take steps to meet the needs of persons sharing a relevant protected characteristic that are different from the needs of persons who do not share it;
- Encourage persons sharing a relevant protected characteristic to participate in public life or in any other activity in which participation by such persons is disproportionately low.

2. Equalities Impact Assessment:

These proposals will have a positive impact upon children and young people with disabilities due to the additional provision that would be available and no negative impact upon groups with protected characteristics. Equalities Impact Assessments have been completed for each project as outlined on page 3.

PROPOSALS FOR PRESCRIBED ALTERATIONS OTHER THAN FOUNDATION PROPOSALS: Information to be included in a complete proposal

Extract of Part 1 of Schedule 3 and Part 1 of Schedule 5 to The School Organisation (Prescribed Alterations to Maintained Schools) (England) Regulations 2007 (as amended):

In respect of an LEA Proposal: School and local education authority details

The name, address and category of the school.

**Holbrook Primary School, Wych Lane, Bridgemary, Gosport, PO13 0JN
(category of school – Community)**

Implementation and any proposed stages for implementation

1. The date on which the proposals are planned to be implemented, and if they are to be implemented in stages, a description of what is planned for each stage, and the number of stages intended and the dates of each stage.

Works to be completed by September 2020.

Objections and comments

2. A statement explaining the procedure for making representations, including —
- (a) the date prescribed in accordance with paragraph 29 of Schedule 3 (GB proposals)/Schedule 5 (LA proposals) of The School Organisation (Prescribed Alterations to Maintained Schools) (England) Regulations 2007 (as amended), by which objections or comments should be sent to the local education authority; and
 - (b) the address of the authority to which objections or comments should be sent.

- (a) **17 April 2020**
- (b) **Within four weeks from the date of publication of these proposals (20 March 2020), any person may object or make comments on the proposal by sending them to Claire Campling, SEN Service Manager, Children's Services Department, Ell Court North, Winchester, Hampshire SO23 8UG; e-mail: strategicplanningunit@hants.gov.uk**

Alteration description

3. A description of the proposed alteration and in the case of special school proposals, a description of the current special needs provision.

The school currently has a resourced provision for pupils with speech, language and communication needs (SLCN), with an agreed pupil number of 14. The proposal is to add a resourced provision for pupils with autism and social communication needs for a further 8 pupils.

School capacity

- 4.—(1) Where the alteration is an alteration falling within any of paragraphs 1 to 4, 8, 9 and 12-14 of Schedule 2 (GB proposals)/paragraphs 1-4, 7, 8, 18, 19 and 21 of Schedule 4 (LA proposals) to The School Organisation (Prescribed Alterations to Maintained Schools) (England) Regulations 2007 (as amended), the proposals must also include —
- (a) details of the current capacity of the school and, where the proposals will alter the capacity of the school, the proposed capacity of the school after the alteration;

The current capacity of the school is 210. The proposal does not raise the capacity of the mainstream school, but instead provides 8 additional places in the Resourced Provision for pupils with autism and social communication needs.

- (b) details of the current number of pupils admitted to the school in each relevant age group, and where this number is to change, the proposed number of pupils to be not admitted in each relevant age group in the first school year in which the proposals will have been implemented;

Holbrook Primary School currently has a PAN of 30. This will not change, however the Resourced Provision will increase its capacity to 22.

- (c) where it is intended that proposals should be implemented in stages, the number of pupils to be admitted to the school in the first school year in which each stage will have been implemented;

Not applicable

- (d) where the number of pupils in any relevant age group is lower than the indicated admission number for that relevant age group a statement to this effect and details of the indicated admission number in question.

Not applicable

(2) Where the alteration is an alteration falling within any of paragraphs 1, 2, 9, 12 and 13 of Schedule 2 (GB proposals) /paragraphs 1, 2, 8, 18 and 19 of Schedule 4 (LA proposals) to The School Organisation (Prescribed Alterations to Maintained Schools) (England) Regulations 2007 (as amended), a statement of the number of pupils at the school at the time of the publication of the proposals.

The number of pupils registered at the school in the 2019/20 school year is 222.

Implementation

5. Where the proposals relate to a foundation or voluntary controlled school a statement as to whether the proposals are to be implemented by the local education authority or by the governing body, and, if the proposals are to be implemented by both, a statement as to the extent to which they are to be implemented by each body.

Not applicable

Additional Site

6. (1) A statement as to whether any new or additional site will be required if proposals are implemented and if so the location of the site if the school is to occupy a split site.

Not applicable

(2) Where proposals relate to a foundation or voluntary school a statement as to who will provide any additional site required, together with details of the tenure (freehold or leasehold) on which the site of the school will be held, and if the site is to be held on a lease, details of the proposed lease.

Not applicable

Objectives

7. The objectives of the proposals.

To create additional capacity for primary aged children with autism and social communication needs.

Consultation

8. Evidence of the consultation before the proposals were published including—
(a) a list of persons who were consulted;

- (b) minutes of all public consultation meetings;
- (c) the views of the persons consulted;
- (d) a statement to the effect that all applicable statutory requirements in relation to the proposals to consult were complied with; and
- (e) copies of all consultation documents and a statement on how these documents were made available.

Formal consultation took place between 20 January and 14 February 2020. A letter was sent to consultees as detailed below and a drop-in session was held at the school on 31 February 2020. The proposal was also included on the County Council's consultation website. The website address was:
<http://consultations.hants.gov.uk/active.aspx>

Letters were sent to;

- **Parents of children at Holbrook Primary School (via the school)**
- **Headteacher of schools involved**
- **Local residents**
- **Chair of Governors at schools involved**
- **School staff**
- **Headteachers, Chairs of Governors at all schools within 2 miles of Holbrook Primary School**
- **Local Councillors of Gosport District Council**
- **Staff union representatives**
- **Local Dioceses**
- **HCC Elected member – Councillor Stephen Philpott**
- **Local MP – Caroline Dinenage MP**

Hampshire County Council received no comments during the consultation period.

All applicable statutory requirements in relation to the proposals to consult were complied with.

Further documents regarding the consultation can be requested from Claire Campling on strategicplanningunit@hants.gov.uk

Project costs

9. A statement of the estimated total capital cost of the proposals and the breakdown of the costs that are to be met by the governing body, the local education authority, and any other party.

The total estimated capital cost of the proposal is £90,000.

10. A copy of confirmation from the Secretary of State, local education authority and the Learning and Skills Council for England (as the case may be) that funds will be made available (including costs to cover any necessary site purchase).

The local education authority will make the capital funds available through the SEND capital grant and the on-going revenue costs will be met by the Schools Budget.

Extended services

11. If the proposed alterations affect the provision of the school's extended services, details of the current extended services the school is offering and details of any proposed change as a result of the alterations.

The proposals do not affect the provision of the school's extended services.

Need or demand for additional places

12. If the proposals involve adding places—
- (a) a statement and supporting evidence of the need or demand for the particular places in the area;

Hampshire County Council has a statutory duty to provide school places for all children including those who have special educational needs and or a disability. There is a gap in provision in the Gosport area for 4 - 11 year old pupils with autism (ASD) and social communication (SLCN) needs.

- (b) where the school has a religious character, a statement and supporting evidence of the demand in the area for education in accordance with the tenets of the religion or religious denomination;

Not applicable

- (c) where the school adheres to a particular philosophy, evidence of the demand for education in accordance with the philosophy in question and any associated change to the admission arrangements for the school.

Not applicable

Expansion of successful and popular schools

- 25A. (1) Proposals must include a statement of whether the proposer considers that the presumption for the expansion of successful and popular schools should apply, and where the governing body consider the presumption applies, evidence to support this.

(2) Sub-paragraph (1) applies to expansion proposals in respect of primary and secondary schools, (except for grammar schools), i.e. falling within:

(a) (for proposals published by the governing body) paragraph 1 of Part 1 to Schedule 2 or paragraph 12 of Part 2 to Schedule 2;

(b) for proposals published by the LA) paragraph 1 of Part 1 to Schedule 4 or 18 of Part 4 to Schedule 4

of the School Organisation (Prescribed Alterations to Maintained Schools) (England) Regulations 2007 (as amended).

Not applicable to this proposal

PROPOSALS FOR PRESCRIBED ALTERATIONS OTHER THAN FOUNDATION PROPOSALS: Information to be included in a complete proposal

Extract of Part 1 of Schedule 3 and Part 1 of Schedule 5 to The School Organisation (Prescribed Alterations to Maintained Schools) (England) Regulations 2007 (as amended):

In respect of an LEA Proposal: School and local education authority details

The name, address and category of the school.

Liss Infant School, Hillbrow Road Liss Petersfield GU33 7LQ (category of school – Community)

Implementation and any proposed stages for implementation

1. The date on which the proposals are planned to be implemented, and if they are to be implemented in stages, a description of what is planned for each stage, and the number of stages intended and the dates of each stage.

Works to be completed by September 2020.

Objections and comments

2. A statement explaining the procedure for making representations, including —
 - (a) the date prescribed in accordance with paragraph 29 of Schedule 3 (GB proposals)/Schedule 5 (LA proposals) of The School Organisation (Prescribed Alterations to Maintained Schools) (England) Regulations 2007 (as amended), by which objections or comments should be sent to the local education authority; and
 - (b) the address of the authority to which objections or comments should be sent.

- (a) **17 April 2020**
- (b) **Within four weeks from the date of publication of these proposals (20 March 2020), any person may object or make comments on the proposal by sending them to Claire Campling, SEN Service Manager, Children's Services Department, Ell Court North, Winchester, Hampshire SO23 8UG; e-mail: strategicplanningunit@hants.gov.uk**

Alteration description

3. A description of the proposed alteration and in the case of special school proposals, a description of the current special needs provision.

The proposal is for the development of a resourced provision at Liss Infant School for pupils with moderate learning difficulties (MLD). The provision would be for 10 pupils, although placement of children would be phased over time. This would be an expansion of the Resourced Provision currently available at Liss Junior School for pupils with moderate learning difficulties (MLD).

School capacity

- 4.—(1) Where the alteration is an alteration falling within any of paragraphs 1 to 4, 8, 9 and 12-14 of Schedule 2 (GB proposals)/paragraphs 1-4, 7, 8, 18, 19 and 21 of Schedule 4 (LA proposals) to The School Organisation (Prescribed Alterations to Maintained Schools) (England) Regulations 2007 (as amended), the proposals must also include —
- (a) details of the current capacity of the school and, where the proposals will alter the capacity of the school, the proposed capacity of the school after the alteration;

The current capacity of the school is 180. The proposal does not raise the capacity of the mainstream school, but instead provides 10 additional places in the Resourced Provision for pupils with moderate learning difficulties (MLD).

- (b) details of the current number of pupils admitted to the school in each relevant age group, and where this number is to change, the proposed number of pupils to be not admitted in each relevant age group in the first school year in which the proposals will have been implemented;

Liss Infant School currently has a PAN of 60. This will not change, however the Resourced Provision will have a capacity 10.

- (c) where it is intended that proposals should be implemented in stages, the number of pupils to be admitted to the school in the first school year in which each stage will have been implemented;

Not applicable

- (d) where the number of pupils in any relevant age group is lower than the indicated admission number for that relevant age group a statement to this effect and details of the indicated admission number in question.

Not applicable

- (2) Where the alteration is an alteration falling within any of paragraphs 1, 2, 9, 12 and 13 of Schedule 2 (GB proposals) /paragraphs 1, 2, 8, 18 and 19 of Schedule 4 (LA proposals)

to The School Organisation (Prescribed Alterations to Maintained Schools) (England) Regulations 2007 (as amended), a statement of the number of pupils at the school at the time of the publication of the proposals.

The number of pupils registered at the school in the 2019/20 school year is 138

Implementation

5. Where the proposals relate to a foundation or voluntary controlled school a statement as to whether the proposals are to be implemented by the local education authority or by the governing body, and, if the proposals are to be implemented by both, a statement as to the extent to which they are to be implemented by each body.

Not applicable

Additional Site

6. (1) A statement as to whether any new or additional site will be required if proposals are implemented and if so the location of the site if the school is to occupy a split site.

Not applicable

(2) Where proposals relate to a foundation or voluntary school a statement as to who will provide any additional site required, together with details of the tenure (freehold or leasehold) on which the site of the school will be held, and if the site is to be held on a lease, details of the proposed lease.

Not applicable

Objectives

7. The objectives of the proposals.

To create additional capacity for primary aged children with moderate learning difficulties (MLD).

Consultation

8. Evidence of the consultation before the proposals were published including—
- (a) a list of persons who were consulted;
 - (b) minutes of all public consultation meetings;

- (c) the views of the persons consulted;
- (d) a statement to the effect that all applicable statutory requirements in relation to the proposals to consult were complied with; and
- (e) copies of all consultation documents and a statement on how these documents were made available.

Formal consultation took place between 20 January and 14 February 2020. A letter was sent to consultees as detailed below and a drop-in session was held at the school on 27 January 2020. The proposal was also included on the County Council's consultation website. The website address was: <http://consultations.hants.gov.uk/active.aspx>

Letters were sent to;

- **Parents of children at Liss Infant School (via the schools)**
- **Headteacher of schools involved**
- **Local residents**
- **Chair of Governors at schools involved**
- **School staff**
- **Headteachers, Chairs of Governors at all schools within 2 miles of Liss Infant School**
- **Local Councillors of East Hampshire District Council**
- **Liss Parish Council clerk**
- **Staff union representatives**
- **Local Dioceses**
- **HCC Elected member – Councillor Russell Oppenhiemer**
- **Local MP – Damian Hinds**

Hampshire County Council received no comments during the consultation period.

All applicable statutory requirements in relation to the proposals to consult were complied with.

Further documents regarding the consultation can be requested from Claire Campling on strategieplanningunit@hants.gov.uk

Project costs

9. A statement of the estimated total capital cost of the proposals and the breakdown of the costs that are to be met by the governing body, the local education authority, and any other party.

The total estimated capital cost of the proposal is £20,000.

10. A copy of confirmation from the Secretary of State, local education authority and the Learning and Skills Council for England (as the case may be) that funds will be made available (including costs to cover any necessary site purchase).

The local education authority will make the capital funds available through the SEND capital grant and the on-going revenue costs will be met by the Schools Budget.

Extended services

11. If the proposed alterations affect the provision of the school's extended services, details of the current extended services the school is offering and details of any proposed change as a result of the alterations.

The proposals do not affect the provision of the school's extended services.

Need or demand for additional places

12. If the proposals involve adding places—

- (a) a statement and supporting evidence of the need or demand for the particular places in the area;

Hampshire County Council has a statutory duty to provide school places for all children including those who have special educational needs and or a disability. There is a gap in provision in the East Hampshire area for 4 - 11 year old pupils with Moderate Learning Difficulties (MLD).

- (b) where the school has a religious character, a statement and supporting evidence of the demand in the area for education in accordance with the tenets of the religion or religious denomination;

Not applicable

- (c) where the school adheres to a particular philosophy, evidence of the demand for education in accordance with the philosophy in question and any associated change to the admission arrangements for the school.

Not applicable

Expansion of successful and popular schools

25A. (1) Proposals must include a statement of whether the proposer considers that the presumption for the expansion of successful and popular schools should apply, and where the governing body consider the presumption applies, evidence to support this.

(2) Sub-paragraph (1) applies to expansion proposals in respect of primary and secondary schools, (except for grammar schools), i.e. falling within:

(a) (for proposals published by the governing body) paragraph 1 of Part 1 to Schedule 2 or paragraph 12 of Part 2 to Schedule 2;

(b) (for proposals published by the LA) paragraph 1 of Part 1 to Schedule 4 or 18 of Part 4 to Schedule 4

of the School Organisation (Prescribed Alterations to Maintained Schools) (England) Regulations 2007 (as amended).

Not applicable to this proposal
--

PROPOSALS FOR PRESCRIBED ALTERATIONS OTHER THAN FOUNDATION PROPOSALS: Information to be included in a complete proposal

Extract of Part 1 of Schedule 3 and Part 1 of Schedule 5 to The School Organisation (Prescribed Alterations to Maintained Schools) (England) Regulations 2007 (as amended):

In respect of an LEA Proposal: School and local education authority details

The name, address and category of the school.

Medstead Church Of England Primary School, Roedowns Road, Medstead, Alton, GU34 5LG (category of school – Controlled C of E)

Implementation and any proposed stages for implementation

13. The date on which the proposals are planned to be implemented, and if they are to be implemented in stages, a description of what is planned for each stage, and the number of stages intended and the dates of each stage.

Works to be completed by September 2020.

Objections and comments

- 14.** A statement explaining the procedure for making representations, including —
- (a) the date prescribed in accordance with paragraph 29 of Schedule 3 (GB proposals)/Schedule 5 (LA proposals) of The School Organisation (Prescribed Alterations to Maintained Schools) (England) Regulations 2007 (as amended), by which objections or comments should be sent to the local education authority; and
 - (b) the address of the authority to which objections or comments should be sent.

- (a) **17 April 2020**
- (b) **Within four weeks from the date of publication of these proposals (20 March 2020, any person may object or make comments on the proposal by sending them to Claire Campling, SEN Service Manager, Children’s Services Department, Ell Court North, Winchester, Hampshire SO23 8UG; e-mail: strategicplanningunit@hants.gov.uk**

Alteration description

15. A description of the proposed alteration and in the case of special school proposals, a description of the current special needs provision.

The proposal is to increase the capacity of the Resourced Provision for pupils with a Hearing Impairment to 14 places by providing extra provision at the school. The school currently provides 210 mainstream places and 9 places for children with a Hearing Impairment (HI).

School capacity

16.—(1) Where the alteration is an alteration falling within any of paragraphs 1 to 4, 8, 9 and 12-14 of Schedule 2 (GB proposals)/paragraphs 1-4, 7, 8, 18, 19 and 21 of Schedule 4 (LA proposals) to The School Organisation (Prescribed Alterations to Maintained Schools) (England) Regulations 2007 (as amended), the proposals must also include

- (a) details of the current capacity of the school and, where the proposals will alter the capacity of the school, the proposed capacity of the school after the alteration;

The current capacity of the school is 210. The proposal does not raise the capacity of the mainstream school, but instead provides 5 additional places in the Resourced Provision for pupils with a Hearing Impairment.

- (b) details of the current number of pupils admitted to the school in each relevant age group, and where this number is to change, the proposed number of pupils to be not admitted in each relevant age group in the first school year in which the proposals will have been implemented;

Medstead Church of England Primary School currently has a PAN of 30. This will not change, however the Resourced Provision will increase its capacity to 14.

- (c) where it is intended that proposals should be implemented in stages, the number of pupils to be admitted to the school in the first school year in which each stage will have been implemented;

Not applicable

- (d) where the number of pupils in any relevant age group is lower than the indicated admission number for that relevant age group a statement to this effect and details of the indicated admission number in question.

Not applicable

(2) Where the alteration is an alteration falling within any of paragraphs 1, 2, 9, 12 and 13 of Schedule 2 (GB proposals) /paragraphs 1, 2, 8, 18 and 19 of Schedule 4 (LA proposals) to The School Organisation (Prescribed Alterations to Maintained Schools) (England)

Regulations 2007 (as amended), a statement of the number of pupils at the school at the time of the publication of the proposals.

The number of pupils registered at the school in the 2019/20 school year is 212

Implementation

17. Where the proposals relate to a foundation or voluntary controlled school a statement as to whether the proposals are to be implemented by the local education authority or by the governing body, and, if the proposals are to be implemented by both, a statement as to the extent to which they are to be implemented by each body.

Not applicable

Additional Site

18. (1) A statement as to whether any new or additional site will be required if proposals are implemented and if so the location of the site if the school is to occupy a split site.

Not applicable

(2) Where proposals relate to a foundation or voluntary school a statement as to who will provide any additional site required, together with details of the tenure (freehold or leasehold) on which the site of the school will be held, and if the site is to be held on a lease, details of the proposed lease.

Not applicable

Objectives

19. The objectives of the proposals.

To create additional capacity for primary aged children with a Hearing Impairment (HI)

Consultation

20. Evidence of the consultation before the proposals were published including—

- (a) a list of persons who were consulted;
- (b) minutes of all public consultation meetings;
- (c) the views of the persons consulted;

- (d) a statement to the effect that all applicable statutory requirements in relation to the proposals to consult were complied with; and
- (e) copies of all consultation documents and a statement on how these documents were made available.

Formal consultation took place between 20 January and 14 February 2020. A letter was sent to consultees as detailed below and a drop-in session was held at the school on 5 February 2020. The proposal was also included on the County Council's consultation website. The website address was:
<http://consultations.hants.gov.uk/active.aspx>

Letters were sent to;

- Parents of children at Medstead Church Of England Primary School (via the schools)
- Headteacher of schools involved
- Local residents
- Chair of Governors at schools involved
- School staff
- Headteachers, Chairs of Governors at all schools within 2 miles of Medstead Church Of England Primary School
- Local Councillors of East Hampshire District Council
- Medstead Parish Council clerk
- Staff union representatives
- Local Dioceses
- HCC Elected member – Councillor Mark Kemp-Gee
- Local MP – Damian Hinds

Hampshire County Council received no comments during the consultation period.

All applicable statutory requirements in relation to the proposals to consult were complied with.

Further documents regarding the consultation can be requested from Claire Campling on strategicplanningunit@hants.gov.uk

Project costs

- 21.** A statement of the estimated total capital cost of the proposals and the breakdown of the costs that are to be met by the governing body, the local education authority, and any other party.

The total estimated cost is £20,000.

- 22.** A copy of confirmation from the Secretary of State, local education authority and the Learning and Skills Council for England (as the case may be) that funds will be made available (including costs to cover any necessary site purchase).

The local education authority will make the capital funds available through the SEND capital grant and the on-going revenue costs will be met by the Schools Budget.

Extended services

23. If the proposed alterations affect the provision of the school's extended services, details of the current extended services the school is offering and details of any proposed change as a result of the alterations.

The proposals do not affect the provision of the school's extended services.

Need or demand for additional places

24. If the proposals involve adding places—

- (a) a statement and supporting evidence of the need or demand for the particular places in the area;

Hampshire County Council has a statutory duty to provide school places for all children including those who have special educational needs and or a disability. There is a gap in provision in the East Hampshire area for 4 - 11 year old pupils with a hearing impairment (HI).

- (b) where the school has a religious character, a statement and supporting evidence of the demand in the area for education in accordance with the tenets of the religion or religious denomination;

Not applicable

- (c) where the school adheres to a particular philosophy, evidence of the demand for education in accordance with the philosophy in question and any associated change to the admission arrangements for the school.

Not applicable

Expansion of successful and popular schools

- 25A. (1) Proposals must include a statement of whether the proposer considers that the presumption for the expansion of successful and popular schools should apply, and where the governing body consider the presumption applies, evidence to support this.

- (2) Sub-paragraph (1) applies to expansion proposals in respect of primary and secondary schools, (except for grammar schools), i.e. falling within:

(a) (for proposals published by the governing body) paragraph 1 of Part 1 to Schedule 2 or paragraph 12 of Part 2 to Schedule 2;

(b) (for proposals published by the LA) paragraph 1 of Part 1 to Schedule 4 or 18 of Part 4 to Schedule 4

of the School Organisation (Prescribed Alterations to Maintained Schools) (England) Regulations 2007 (as amended).

Not applicable to this proposal

PROPOSALS FOR PRESCRIBED ALTERATIONS OTHER THAN FOUNDATION PROPOSALS: Information to be included in a complete proposal

Extract of Part 1 of Schedule 3 and Part 1 of Schedule 5 to The School Organisation (Prescribed Alterations to Maintained Schools)(England) Regulations 2007 (as amended):

In respect of an LEA Proposal: School and local education authority details

The name, address and category of the school.

Pennington Junior School, Priestlands Road, Pennington, Lymington, SO41 8HX (category of school – Controlled C of E)

Implementation and any proposed stages for implementation

1. The date on which the proposals are planned to be implemented, and if they are to be implemented in stages, a description of what is planned for each stage, and the number of stages intended and the dates of each stage.

Works to be completed by September 2020.

Objections and comments

2. A statement explaining the procedure for making representations, including —
the date prescribed in accordance with paragraph 29 of Schedule 3 (GB proposals)/Schedule 5 (LA proposals) of The School Organisation (Prescribed Alterations to Maintained Schools) (England) Regulations 2007 (as amended), by which objections or comments should be sent to the local education authority; and
the address of the authority to which objections or comments should be sent.

- (a) **17 April 2020**
- (b) **Within four weeks from the date of publication of these proposals (20 March 2020), any person may object or make comments on the proposal by sending them to Christine Jones, SEN Service Manager, Children's Services Department, Ell Court North, Winchester, Hampshire SO23 8UG; e-mail: strategicplanningunit@hants.gov.uk**

Alteration description

3. A description of the proposed alteration and in the case of special school proposals, a description of the current special needs provision.

The proposal is to create a resourced provision at Pennington Junior School by providing provision for 5 places for children with social, emotional and mental health (SEMH) difficulties.

School capacity

4.—(1) Where the alteration is an alteration falling within any of paragraphs 1 to 4, 8, 9 and 12-14 of Schedule 2 (GB proposals)/paragraphs 1-4, 7, 8, 18, 19 and 21 of Schedule 4 (LA proposals) to The School Organisation (Prescribed Alterations to Maintained Schools) (England) Regulations 2007 (as amended), the proposals must also include —

(a) details of the current capacity of the school and, where the proposals will alter the capacity of the school, the proposed capacity of the school after the alteration;

The current capacity of the school is 208. The proposal does not raise the capacity of mainstream places, but instead provides 5 additional places in a resourced provision at Pennington Junior School.

(b) details of the current number of pupils admitted to the school in each relevant age group, and where this number is to change, the proposed number of pupils to be not admitted in each relevant age group in the first school year in which the proposals will have been implemented;

Pennington Junior School currently has a PAN of 52. The proposed arrangement would allow for 5 extra pupils in total at the resourced provision.

(c) where it is intended that proposals should be implemented in stages, the number of pupils to be admitted to the school in the first school year in which each stage will have been implemented;

Not applicable

(d) where the number of pupils in any relevant age group is lower than the indicated admission number for that relevant age group a statement to this effect and details of the indicated admission number in question.

Not applicable

(2) Where the alteration is an alteration falling within any of paragraphs 1, 2, 9, 12 and 13 of Schedule 2 (GB proposals) /paragraphs 1, 2, 8, 18 and 19 of Schedule 4 (LA proposals) to The School Organisation (Prescribed Alterations to Maintained Schools) (England) Regulations 2007 (as amended), a statement of the number of pupils at the school at the time of the publication of the proposals.

The number of pupils registered at the school in the 2019/20 school year is 169

Implementation

5. Where the proposals relate to a foundation or voluntary controlled school a statement as to whether the proposals are to be implemented by the local education authority or by the governing body, and, if the proposals are to be implemented by both, a statement as to the extent to which they are to be implemented by each body.

Not applicable

Additional Site

6. (1) A statement as to whether any new or additional site will be required if proposals are implemented and if so the location of the site if the school is to occupy a split site.

Not applicable

(2) Where proposals relate to a foundation or voluntary school a statement as to who will provide any additional site required, together with details of the tenure (freehold or leasehold) on which the site of the school will be held, and if the site is to be held on a lease, details of the proposed lease.

Not applicable

Objectives

7. The objectives of the proposals.

To create additional capacity for primary aged children 7-11 with social, emotional and mental health (SEMH) difficulties

Consultation

8. Evidence of the consultation before the proposals were published including—
- (a) a list of persons who were consulted;
 - (b) minutes of all public consultation meetings;
 - (c) the views of the persons consulted;
 - (d) a statement to the effect that all applicable statutory requirements in relation to the proposals to consult were complied with; and
 - (e) copies of all consultation documents and a statement on how these documents were made available.

Formal consultation took place between 20 January and 14 February 2020. A letter was sent to consultees as detailed below and a drop-in session was held at the school on 5 February 2020. The proposal was also included on the County Council's consultation website. The website address was:

<http://consultations.hants.gov.uk/active.aspx>

Letters were sent to;

- Parents of children at the school (via the schools)
- Local residents near Pennington Junior School
- Headteacher of schools involved
- Chair of Governors at schools involved
- School staff
- Headteachers, Chairs of Governors at all schools within 2 miles of Pennington Junior School
- Local Councillors of New Forest District Council
- Lymington & Pennington Town Council clerk
- Staff union representatives
- Local Dioceses
- HCC Elected member – Councillor Michael White
- Local MP – Desmond Swayne

Hampshire County Council received no comments during the consultation period.

All applicable statutory requirements in relation to the proposals to consult were complied with.

Further documents regarding the consultation can be requested from Christine Jones on strategicplanningunit@hants.gov.uk

Project costs

9. A statement of the estimated total capital cost of the proposals and the breakdown of the costs that are to be met by the governing body, the local education authority, and any other party.

The total estimated cost is £20,000.

10. A copy of confirmation from the Secretary of State, local education authority and the Learning and Skills Council for England (as the case may be) that funds will be made available (including costs to cover any necessary site purchase).

The local education authority will make the capital funds available through the SEND capital grant and the on-going revenue costs will be met by the Schools Budget.

Extended services

11. If the proposed alterations affect the provision of the school's extended services, details of the current extended services the school is offering and details of any proposed change as a result of the alterations.

The proposals do not affect the provision of the school's extended services.

Need or demand for additional places

12. If the proposals involve adding places—
- (a) a statement and supporting evidence of the need or demand for the particular places in the area;

Hampshire County Council has a statutory duty to provide school places for all children including those who have special educational needs and or a disability. There is a gap in provision in the New Forest area for 7 - 11 year old pupils with social, emotional and mental health (SEMH) difficulties.

- (b) where the school has a religious character, a statement and supporting evidence of the demand in the area for education in accordance with the tenets of the religion or religious denomination;

Not applicable

- (c) where the school adheres to a particular philosophy, evidence of the demand for education in accordance with the philosophy in question and any associated change to the admission arrangements for the school.

Not applicable

Expansion of successful and popular schools

- 25A. (1) Proposals must include a statement of whether the proposer considers that the presumption for the expansion of successful and popular schools should apply, and where the governing body consider the presumption applies, evidence to support this.

- (2) Sub-paragraph (1) applies to expansion proposals in respect of primary and secondary

schools, (except for grammar schools), i.e. falling within:

(a) (for proposals published by the governing body) paragraph 1 of Part 1 to Schedule 2 or paragraph 12 of Part 2 to Schedule 2;

(b) (for proposals published by the LA) paragraph 1 of Part 1 to Schedule 4 or 18 of Part 4 to Schedule 4

of the School Organisation (Prescribed Alterations to Maintained Schools) (England) Regulations 2007 (as amended).

Not applicable to this proposal

PROPOSALS FOR PRESCRIBED ALTERATIONS OTHER THAN FOUNDATION PROPOSALS: Information to be included in a complete proposal

Extract of Part 1 of Schedule 3 and Part 1 of Schedule 5 to The School Organisation (Prescribed Alterations to Maintained Schools) (England) Regulations 2007 (as amended):

In respect of an LEA Proposal: School and local education authority details

The name, address and category of the school.

**The Federation of Trosnant Schools, Stockheath Lane Havant
Hampshire PO9 3BD (category of school – Community)**

Implementation and any proposed stages for implementation

25. The date on which the proposals are planned to be implemented, and if they are to be implemented in stages, a description of what is planned for each stage, and the number of stages intended and the dates of each stage.

It is proposed that the resourced provision will be available for infant aged children from September 2020.

Objections and comments

26. A statement explaining the procedure for making representations, including —
- (a) the date prescribed in accordance with paragraph 29 of Schedule 3 (GB proposals)/Schedule 5 (LA proposals) of The School Organisation (Prescribed Alterations to Maintained Schools) (England) Regulations 2007 (as amended), by which objections or comments should be sent to the local education authority; and
 - (b) the address of the authority to which objections or comments should be sent.

- (a) **17 April 2020**
- (b) **Within four weeks from the date of publication of these proposals (20 March 2020), any person may object or make comments on the proposal by sending them to Claire Campling, SEN Service Manager, Children's Services Department, Ell Court North, Winchester, Hampshire SO23 8UG; e-mail: strategicplanningunit@hants.gov.uk**

Alteration description

27. A description of the proposed alteration and in the case of special school proposals, a description of the current special needs provision.

The proposal is to include infant aged pupils in the resourced provision at The Federation of Trosnant Schools for pupils with social, emotional and mental health needs.

School capacity

28.—(1) Where the alteration is an alteration falling within any of paragraphs 1 to 4, 8, 9 and 12-14 of Schedule 2 (GB proposals)/paragraphs 1-4, 7, 8, 18, 19 and 21 of Schedule 4 (LA proposals) to The School Organisation (Prescribed Alterations to Maintained Schools) (England) Regulations 2007 (as amended), the proposals must also include —

- (a) details of the current capacity of the school and, where the proposals will alter the capacity of the school, the proposed capacity of the school after the alteration;

The current capacity of the federated schools is 450. The proposal does not raise the capacity, but instead changes the age range of the resourced provision to allow infant aged children to be admitted.

- (b) details of the current number of pupils admitted to the school in each relevant age group, and where this number is to change, the proposed number of pupils to be not admitted in each relevant age group in the first school year in which the proposals will have been implemented;

Trosnant Infant School and Trosnant Junior School both have a PAN of 60.

- (c) where it is intended that proposals should be implemented in stages, the number of pupils to be admitted to the school in the first school year in which each stage will have been implemented;

Not applicable

- (d) where the number of pupils in any relevant age group is lower than the indicated admission number for that relevant age group a statement to this effect and details of the indicated admission number in question.

Not applicable

(2) Where the alteration is an alteration falling within any of paragraphs 1, 2, 9, 12 and 13 of Schedule 2 (GB proposals) /paragraphs 1, 2, 8, 18 and 19 of Schedule 4 (LA proposals) to The School Organisation (Prescribed Alterations to Maintained Schools) (England) Regulations 2007 (as amended), a statement of the number of pupils at the school at the time of the publication of the proposals.

The number of pupils registered at the Infant and Junior schools in the 2019/20 school year is 179 and 257 respectively.

Implementation

29. Where the proposals relate to a foundation or voluntary controlled school a statement as to whether the proposals are to be implemented by the local education authority or by the governing body, and, if the proposals are to be implemented by both, a statement as to the extent to which they are to be implemented by each body.

Not applicable

Additional Site

30.—(1) A statement as to whether any new or additional site will be required if proposals are implemented and if so the location of the site if the school is to occupy a split site.

Not applicable

(2) Where proposals relate to a foundation or voluntary school a statement as to who will provide any additional site required, together with details of the tenure (freehold or leasehold) on which the site of the school will be held, and if the site is to be held on a lease, details of the proposed lease.

Not applicable

Objectives

31. The objectives of the proposals.

To create additional capacity for infant aged children with social, emotional and mental health (SEMH) difficulties

Consultation

32. Evidence of the consultation before the proposals were published including—

- (a) a list of persons who were consulted;
- (b) minutes of all public consultation meetings;
- (c) the views of the persons consulted;
- (d) a statement to the effect that all applicable statutory requirements in relation to the proposals to consult were complied with; and
- (e) copies of all consultation documents and a statement on how these documents were made available.

Formal consultation took place between 20 January and 14 February 2020. A letter was sent to consultees as detailed below and a drop-in session was held at the school on 28 January 2020. The proposal was also included on the County Council's consultation website. The website address was: <http://consultations.hants.gov.uk/active.aspx>

Letters were sent to;

- Parents of children at both schools (via the schools)
- Headteacher of schools involved
- Chair of Governors at schools involved
- School staff
- Headteachers, Chairs of Governors at all schools within 2 miles of Trosnant School
- Local Councillors of Havant Borough Council
- Staff union representatives
- Local Dioceses
- HCC Elected member – Councillor Jackie Branson
- Local MP – Alan Mak

Hampshire County Council received one comment during the consultation period. The comment received was broadly in agreement with the proposal.

Further information has been provided to answer the questions raised and it is considered that the comments received do not represent sufficient concern to prevent proceeding with the enlargement.

All applicable statutory requirements in relation to the proposals to consult were complied with.

Further documents regarding the consultation can be requested from Claire Campling on strategicplanningunit@hants.gov.uk

Project costs

33. A statement of the estimated total capital cost of the proposals and the breakdown of the costs that are to be met by the governing body, the local education authority, and any other party.

The total capital cost of the proposal is £30,000.

34. A copy of confirmation from the Secretary of State, local education authority and the Learning and Skills Council for England (as the case may be) that funds will be made available (including costs to cover any necessary site purchase).

Not applicable

Extended services

35. If the proposed alterations affect the provision of the school's extended services, details of the current extended services the school is offering and details of any proposed change as a result of the alterations.

The proposals do not affect the provision of the school's extended services.

Need or demand for additional places

36. If the proposals involve adding places—

- (a) a statement and supporting evidence of the need or demand for the particular places in the area;

Not applicable

- (b) where the school has a religious character, a statement and supporting evidence of the demand in the area for education in accordance with the tenets of the religion or religious denomination;

Not applicable

- (c) where the school adheres to a particular philosophy, evidence of the demand for education in accordance with the philosophy in question and any associated change to the admission arrangements for the school.

Not applicable

Expansion of successful and popular schools

25A. (1) Proposals must include a statement of whether the proposer considers that the presumption for the expansion of successful and popular schools should apply, and where the governing body consider the presumption applies, evidence to support this.

(2) Sub-paragraph (1) applies to expansion proposals in respect of primary and secondary schools, (except for grammar schools), i.e. falling within:

(a) (for proposals published by the governing body) paragraph 1 of Part 1 to Schedule 2 or paragraph 12 of Part 2 to Schedule 2;

(b) (for proposals published by the LA) paragraph 1 of Part 1 to Schedule 4 or 18 of Part 4 to Schedule 4

of the School Organisation (Prescribed Alterations to Maintained Schools) (England) Regulations 2007 (as amended).

Not applicable to this proposal



Children's Services Department
Elizabeth II Court North,
Winchester
Hampshire SO23 8UG

Telephone 01962 841841
Textphone 0845 603 5625

Consultees

Enquiries to	Claire Campling	My reference	Holbrook Primary School RP
Direct Line	01962 832206	Your reference	Holbrook Primary School RP
Date	20 January 2020	E-mail	strategicplanningunit@hants.gov.uk

Dear Consultee

Proposal for developing a resourced provision at Holbrook Primary School for pupils with autism and social communication needs - Consultation

Holbrook Primary School currently has a resourced provision for pupils with speech, language and communication needs. The pupils who attend this provision, are on roll at the mainstream school but the school receive additional resources to provide specific input to ensure that the children's speech and language skills are well supported so that they can access the mainstream environment and curriculum. The school have developed an impressive specialism and the children attending have positive outcomes.

The school have recently contacted the SEN Service to explore the possibility of expanding the resourced provision to meet the needs of children who are on the autistic spectrum and so we are looking into the feasibility of this.

Children with this diagnosis will have difficulties with social communication and can also have speech and language needs and the school already support a number of children with such needs. It has been identified that there are an increasing number of children in the county who are being diagnosed with this condition and we are working towards expanding our offer of support to these children.

From September 2019, Holbrook Primary School reduced their Admission Number to 30 per year group and therefore this frees up classroom spaces within the school which have been identified to be adapted to expand the resourced provision.

The Consultation

The purpose of this consultation is to ask for your views and consult on the development of a resourced provision for pupils with autism and social communication needs at Holbrook Primary School from September 2020. It is

Director of Children's Services
Steve Crocker OBE

important to hear your views at this stage so we can consider them as part of the work to be undertaken should approval be obtained.

This consultation will run from the 20 January to the 14 February 2020. Officers will then take into consideration all the consultation responses received before deciding whether the proposal should continue to the formal publication stage. If so, a statutory Public Notice will be published setting out Hampshire County Council's intent to increase the capacity of the school. It is anticipated that this will be published in March 2020.

After the date of publication there will be a four week period in which any representations can be made to the local authority. After the conclusion of this period the County Council will decide whether or not to proceed with the proposal. It is anticipated that a decision will be made in May 2020.

Further Information

A drop-in session where you will be able to discuss the proposal with Hampshire County Council officers will take place on the 31 January between 3pm and 5pm at Holbrook Primary School.

If you are unable to attend this session and wish to make a comment then please write to Claire Campling, SEN Service Manager, Children's Services Department, E11 Court North, Winchester, Hampshire SO23 8UG or e-mail strategicplanningunit@hants.gov.uk by the 14 February 2020.

Yours sincerely,



Claire Campling
SEN Service Manager
Children's Services Department

Children's Services Department
Elizabeth II Court North,
Winchester
Hampshire SO23 8UG

Telephone 01962 841841
Textphone 0845 603 5625

Consultees

Enquiries to	Claire Campling	My reference	Liss Infant School RP
Direct Line	01962 832206	Your reference	Liss Infant School RP
Date	20 January 2020	E-mail	strategicplanningunit@hants.gov.uk

Dear Consultee

Proposal for a resourced provision at Liss Infant School for pupils with moderate learning difficulties - Consultation

Liss Junior School currently has a resourced provision for pupils with moderate learning difficulties. The children attending this provision achieve positive outcomes and the staff team have developed a high level of skill in meeting the needs of these children.

There are a number of younger children who would benefit from attending such a provision who would find it difficult to manage in a mainstream school without the additional expertise and resources. The Executive Headteacher, Mrs Myers, is keen to expand the resourced provision into Liss Infant School. Mrs Myers has identified a classroom currently unused by the school, which can be further converted to make an appropriate environment for the provision.

The Consultation

The purpose of this consultation is to ask for your views and consult on the proposed development of a resourced provision at Liss Infant School for pupils with moderate learning difficulties (MLD). The provision would be for 10 pupils, although placement of children would be phased over time. The aim is for this provision to start in September 2020 and we are excited about the opportunity to be able to provide a positive space with skilled staff and appropriate resources for these vulnerable children. It is important to hear your views at this stage so we can consider them as part of the work to be undertaken should approval be obtained.

This consultation will run from the 20 January to the 14 February 2020. Officers will then take into consideration all the consultation responses received before deciding whether the proposal should continue to the formal publication stage. If so, a statutory Public Notice will be published, setting out Hampshire County Council's

Director of Children's Services
Steve Crocker OBE

intent to increase the capacity of the school. It is anticipated that this will be published in March 2020.

After the date of publication there will be a four week period in which any representations can be made to the local authority. After the conclusion of this period the County Council will decide whether or not to proceed with the proposal. It is anticipated that a decision will be made in May 2020.

Further Information

A drop-in session where you will be able to discuss the proposal with Hampshire County Council officers will take place on the 27 January between 3pm and 5.30pm at Liss Junior School.

If you are unable to attend this session and wish to make a comment then please write to Claire Campling, SEN Service Manager, Children's Services Department, Ell Court North, Winchester, Hampshire SO23 8UG or e-mail strategicplanningunit@hants.gov.uk by the 14 February 2020.

Yours sincerely,

A handwritten signature in blue ink, appearing to read 'Claire Campling', with a long horizontal flourish extending to the right.

Claire Campling

**SEN Service Manager
Children's Services Department**

Consultees

Enquiries to	Claire Campling	My reference	Medstead Primary School RP
Direct Line	01962 832206	Your reference	Medstead Primary School RP
Date	20 January 2020	E-mail	strategicplanningunit@hants.gov.uk

Dear Consultee

Proposal for increasing the agreed pupil numbers in the resourced provision at Medstead Primary School for pupils with a hearing impairment- Consultation

Medstead Primary School currently has a very successful resourced provision for pupils with a hearing impairment known as The Yew. There is a small increase in the number of children needing this type of provision and so, in consultation with the Headteacher Mrs Obom and the Chair of Governors Mr Jon Hewett, we are exploring the possibility of making alterations to the classroom currently being used for the provision to increase the number in the resourced provision by an additional five children across the school. Careful consideration is always given to the school's suitability for potential deaf pupils in terms of meeting their needs alongside the needs of all the children.

The Consultation

The purpose of this consultation is to ask for your views and consult on the proposed increase in numbers in the resourced provision at Medstead Primary School for pupils with a hearing impairment (HI). It is important to hear your views at this stage so we can consider them as part of the work to be undertaken should approval be obtained.

This consultation will run from the 20 January to the 14 February 2020. Officers will then take into consideration all the consultation responses received before deciding whether the proposal should continue to the formal publication stage. If so, a statutory Public Notice will be published, setting out Hampshire County Council's intent to increase the capacity of the school by five pupils. It is anticipated that this will be published in March 2020.

After the date of publication there will be a four week period in which any representations can be made to the local authority. After the conclusion of this

Director of Children's Services
Steve Crocker OBE

period the County Council will decide whether or not to proceed with the proposal. It is anticipated that a decision will be made in May 2020.

Further Information

A drop-in session where you will be able to discuss the proposal with Hampshire County Council officers will take place on the **5 February between 3:30pm and 5.30pm at Medstead Primary School.**

There is also a website set up with the details of the consultation which includes some 'Frequently Asked Questions' that may address any questions you have. The link is shown below:

<https://www.hants.gov.uk/aboutthecouncil/haveyoursay/consultations>

If you are unable to attend this session and wish to make a comment then please write to Claire Campling, SEN Service Manager, Children's Services Department, EII Court North, Winchester, Hampshire SO23 8UG or e-mail strategicplanningunit@hants.gov.uk by the **14 February 2020.**

Yours sincerely,



Claire Campling

**SEN Service Manager
Children's Services Department**

Children's Services Department
Elizabeth II Court North,
Winchester
Hampshire SO23 8UG

Telephone 01962 841841
Textphone 0845 603 5625

Consultees

Enquiries to Christine Jones

My reference

Direct Line 01962 846245

Your reference

Date 20 January 2020

E-mail strategicplanningunit@hants.gov.uk

Dear Consultee,

Pennington Junior School – proposed addition of resourced provision for children with Social, Emotional and Mental Health (SEMH) needs

I am writing to you to invite your views in respect of Hampshire County Council's proposal to open a resourced provision for young people with Social, Emotional and Mental Health needs (SEMH) and an Education, Health and Care Plan (EHCP) at Pennington Junior School, Lymington.

The new provision is required as there has been an increase in the number of children with SEMH needs and an EHCP in the New Forest area of Hampshire. It is also needed to support the Hampshire wide strategy of offering support pupils access mainstream education close to their local community with additional support if necessary. The proposed new provision will cater for up to five pupils aged 7-11 and if approved it is proposed that the places will be available from May 2020.

Where a Local Authority proposes to permanently establish Special Education Needs provision at a mainstream school, it must consult on the proposal following a set procedure.

The Local Authority already has five successful Primary SEMH Resourced Provisions across the county. These provisions offer support for children who have difficulty accessing mainstream education on a full-time basis and require additional support to do so. With this additional support, children with social and emotional needs can successfully overcome their difficulties and learn alongside their peers.

The Consultation

This consultation will run until 14 February 2020. Officers will then take into consideration all the consultation responses before deciding whether the proposal should continue to the formal publication stage.

If so, a statutory Public Notice will be published, setting out Hampshire County Council's intent to enlarge the school. It is anticipated that this will be published in March 2020.

Director of Children's Services
Steve Crocker

After the date of publication there will be a four-week period in which any representations can be made. After the conclusion of this period the County Council will decide whether or not to proceed with the proposal. It is anticipated that a decision will be made in May 2020.

Further Information

A drop-in session where you will be able to discuss the proposal with County Council officers is planned for **4 February 2020 from 3.30pm to 5.30pm at Pennington Junior School.**

There is also a website set up with the details of the consultation which includes some 'Frequently Asked Questions' that may address any questions you have. The link is shown below:

<https://www.hants.gov.uk/aboutthecouncil/haveyoursay/consultations>

If you are unable to attend this session or visit the above website and wish to make a comment then please write to Christine Jones, SEN Service Manager, Children's Services Department, Ell Court North, Winchester, Hampshire SO23 8UG or e-mail strategicplanningunit@hants.gov.uk by **14 February 2020.**

Yours sincerely



Christine Jones
SEN Service Manager
Children's Services Department

*Children's Services Department
Elizabeth II Court North,
Winchester
Hampshire SO23 8UG*

Telephone 01962 841841
Textphone 0845 603 5625

Consultees

<i>Enquiries to</i>	Claire Campling	<i>My reference</i>	Trosnant Infant/Junior School RP
<i>Direct Line</i>	01962 832206	<i>Your reference</i>	Trosnant Infant/Junior School RP
<i>Date</i>	20 January 2020	<i>E-mail</i>	strategicplanningunit@hants.gov.uk

Dear Consultee

Proposal for including infant aged pupils in the resourced provision at The Federation of Trosnant Schools for pupils with social, emotional and mental health needs- Consultation

Trosnant Junior School currently has a resourced provision for pupils with social, emotional and mental health (SEMH) needs. It is a successful provision and we are seeing positive outcomes for the children who attend.

There are increasing numbers of children with social, emotional and mental health needs and in particular, children with these needs surfacing at an earlier age. We are clear that the earlier these needs are identified and the correct support is put in place, then the more likely children are to have positive outcomes in the future. We are therefore exploring the possibility of also catering for the needs of infant aged children within the resourced provision. The infant and junior schools are federated and the Executive Headteacher, Ian Waine and his governing team are in support of this change.

The Consultation

The purpose of this consultation is to ask for your views and consult on the proposed inclusion of infant aged children in the resourced provision for pupils with SEMH at The Federation of Trosnant Schools from September 2020. It is important to hear your views at this stage so we can consider them as part of the work to be undertaken should approval be obtained.

This consultation will run from the 20 January to the 14 February 2020. Officers will then take into consideration all the consultation responses received before deciding whether the proposal should continue to the formal publication stage. If so, a statutory Public Notice will be published, setting out Hampshire County Council's

Director of Children's Services
Steve Crocker OBE

intent to change the age range of the pupils within the resourced provision. It is anticipated that this will be published in March 2020.

After the date of publication there will be a four week period in which any representations can be made to the local authority. After the conclusion of this period the County Council will decide whether or not to proceed with the proposal. It is anticipated that a decision will be made in May 2020.

Further Information

A drop-in session where you will be able to discuss the proposal with Hampshire County Council officers will take place on the **28 January between 3:30pm and 5.30pm at Trosnant Junior School.**

If you are unable to attend this session and wish to make a comment then please write to Claire Campling, SEN Service Manager, Children's Services Department, E11 Court North, Winchester, Hampshire SO23 8UG or e-mail strategicplanningunit@hants.gov.uk by the **14 February 2020.**

Yours sincerely,



Claire Campling

**SEN Service Manager
Children's Services Department**

This page is intentionally left blank